

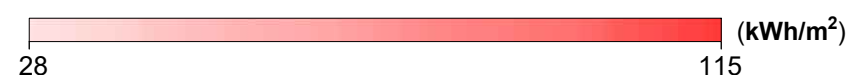
# PRIN2022-PNRR CRiStAll project

## Rome (Italy) - Case study A - Climatic zone D

### Thermal energy need under different climate scenarios

#### Current scenario

##### Energy need for space heating, $EP_{H,nd}$

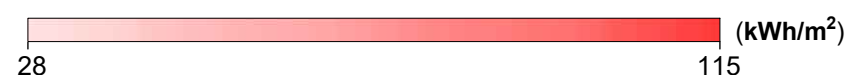


##### Energy need for space cooling, $EP_{C,nd}$



#### Mid-term scenario

##### Energy need for space heating, $EP_{H,nd}$

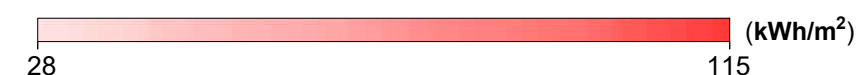


##### Energy need for space cooling, $EP_{C,nd}$



#### Long-term scenario

##### Energy need for space heating, $EP_{H,nd}$



##### Energy need for space cooling, $EP_{C,nd}$



# PRIN2022-PNRR CRiStAll project

## Rome (Italy) - Case study A - Climatic zone D

### Peak load under different climate scenarios

#### Current scenario

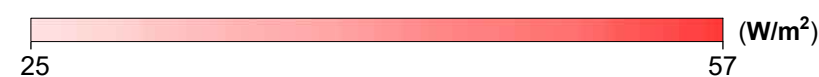
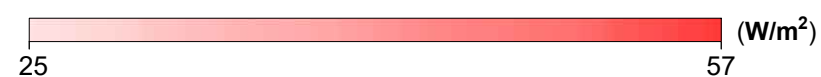
#### Mid-term scenario

#### Long-term scenario

#### Peak heating load, $\Phi_{H,ld}$

#### Peak heating load, $\Phi_{H,ld}$

#### Peak heating load, $\Phi_{H,ld}$



#### Peak cooling load, $\Phi_{C,ld}$

#### Peak cooling load, $\Phi_{C,ld}$

#### Peak cooling load, $\Phi_{C,ld}$



# PRIN2022-PNRR CRiStAll project

## Rome (Italy) - Case study B - Climatic zone D

### Thermal energy need under different climate scenarios

#### Current scenario

##### Energy need for space heating, $EP_{H,nd}$



##### Energy need for space cooling, $EP_{C,nd}$



#### Mid-term scenario

##### Energy need for space heating, $EP_{H,nd}$

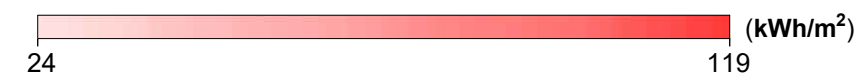


##### Energy need for space cooling, $EP_{C,nd}$

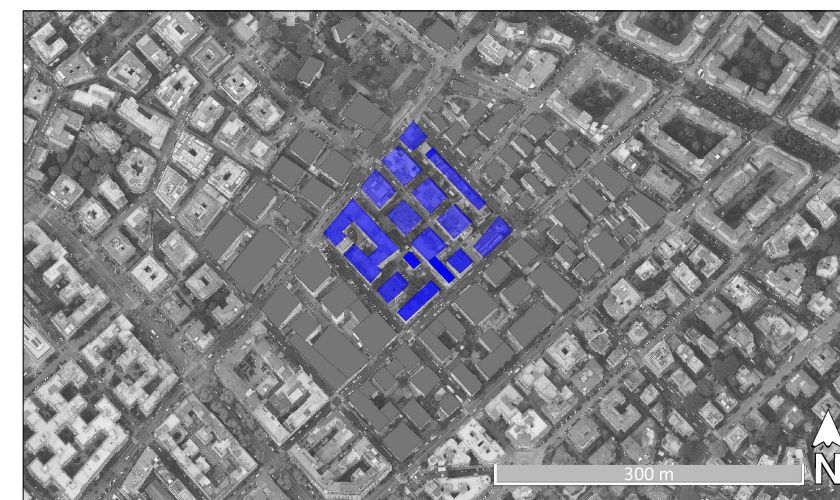


#### Long-term scenario

##### Energy need for space heating, $EP_{H,nd}$



##### Energy need for space cooling, $EP_{C,nd}$



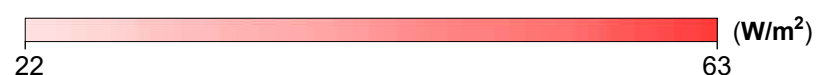
# PRIN2022-PNRR CRiStAll project

## Rome (Italy) - Case study B - Climatic zone D

### Peak load under different climate scenarios

#### Current scenario

##### Peak heating load, $\Phi_{H,ld}$



##### Peak cooling load, $\Phi_{C,ld}$

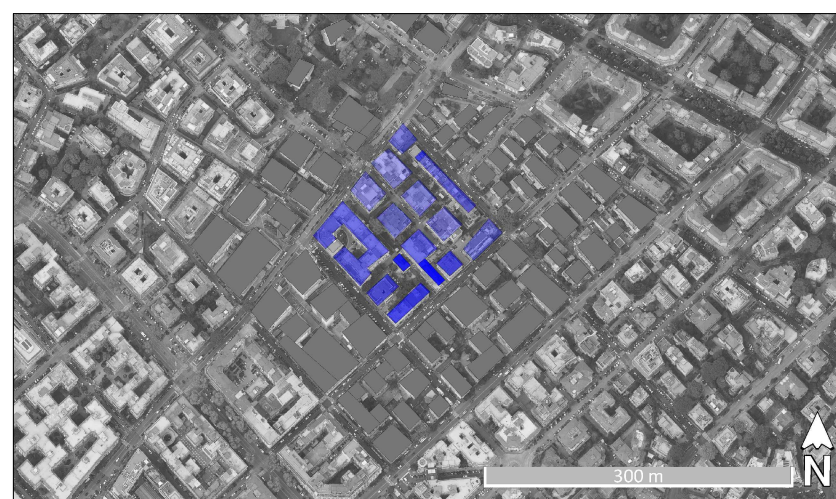


#### Mid-term scenario

##### Peak heating load, $\Phi_{H,ld}$



##### Peak cooling load, $\Phi_{C,ld}$

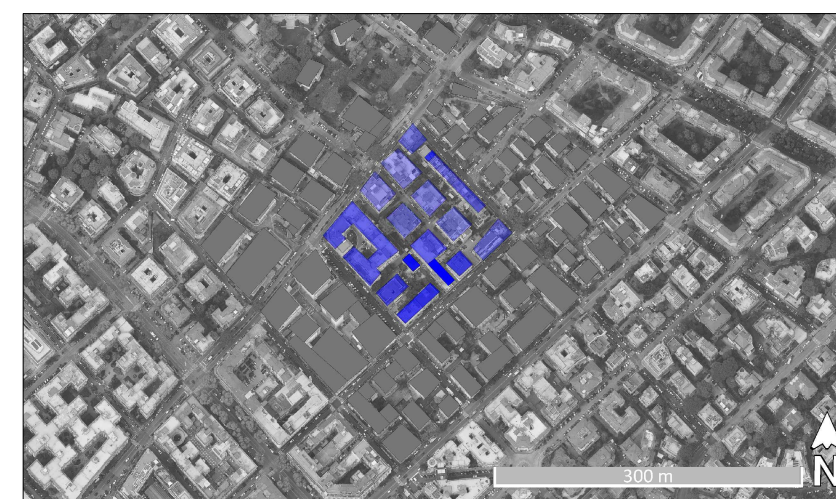


#### Long-term scenario

##### Peak heating load, $\Phi_{H,ld}$



##### Peak cooling load, $\Phi_{C,ld}$



# PRIN2022-PNRR CRiStAll project

## Rome (Italy) - Case study C - Climatic zone D

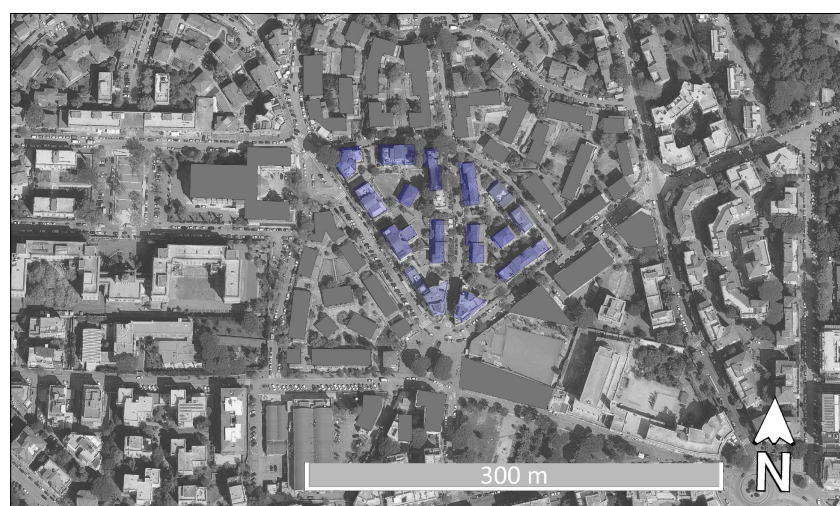
### Thermal energy need under different climate scenarios

#### Current scenario

##### Energy need for space heating, $EP_{H,nd}$

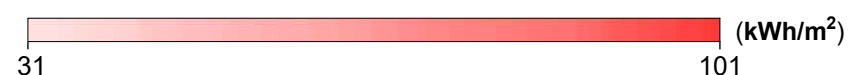


##### Energy need for space cooling, $EP_{C,nd}$



#### Mid-term scenario

##### Energy need for space heating, $EP_{H,nd}$



##### Energy need for space cooling, $EP_{C,nd}$



#### Long-term scenario

##### Energy need for space heating, $EP_{H,nd}$



##### Energy need for space cooling, $EP_{C,nd}$



# PRIN2022-PNRR CRiStAll project

## Rome (Italy) - Case study C - Climatic zone D

### Peak load under different climate scenarios

#### Current scenario

##### Peak heating load, $\Phi_{H,ld}$

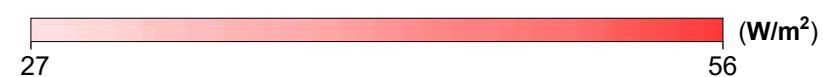


##### Peak cooling load, $\Phi_{C,ld}$

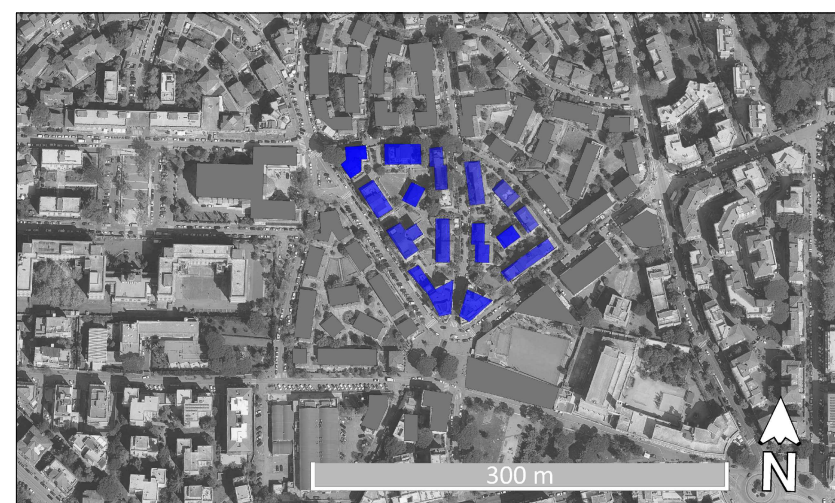


#### Mid-term scenario

##### Peak heating load, $\Phi_{H,ld}$

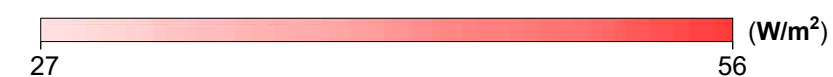


##### Peak cooling load, $\Phi_{C,ld}$



#### Long-term scenario

##### Peak heating load, $\Phi_{H,ld}$



##### Peak cooling load, $\Phi_{C,ld}$

