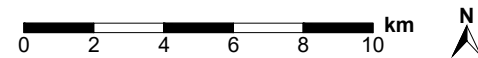
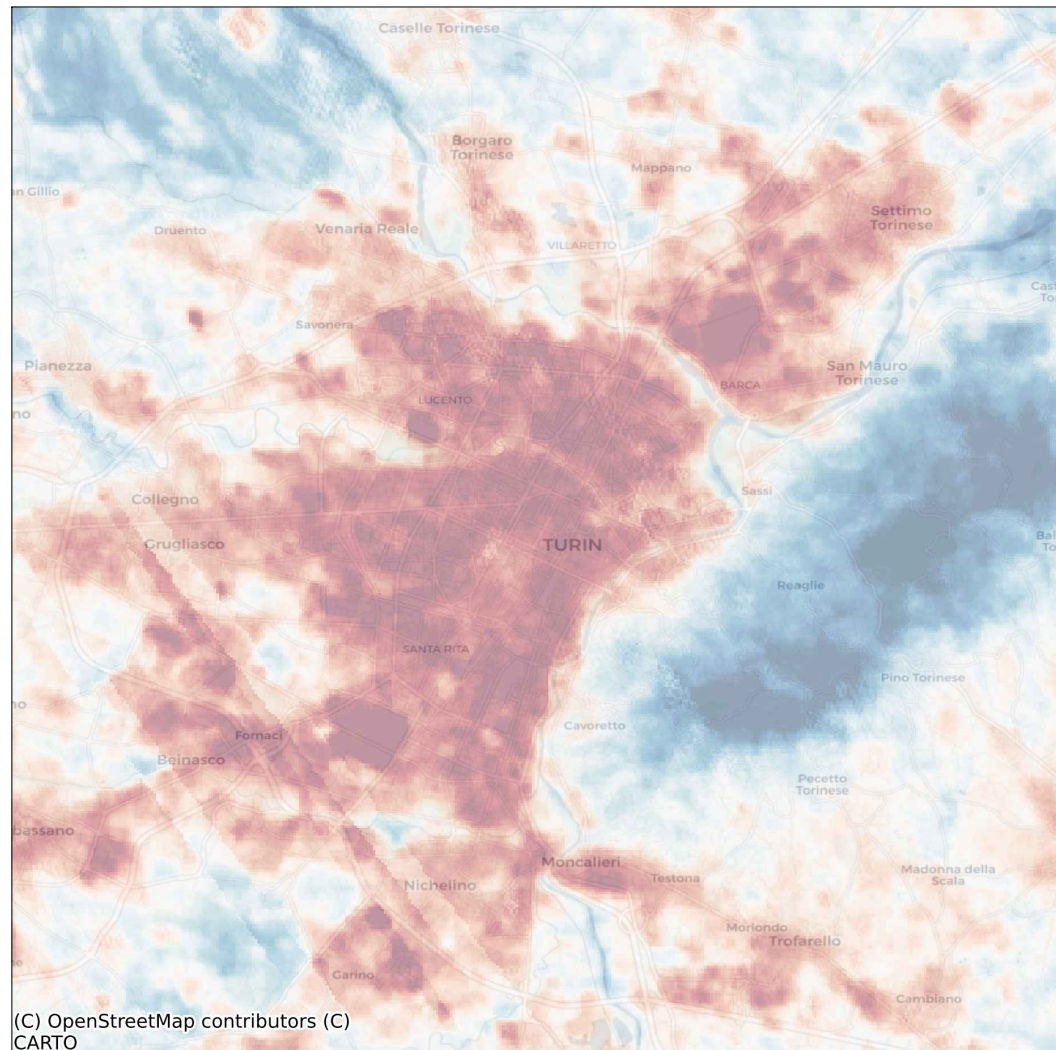
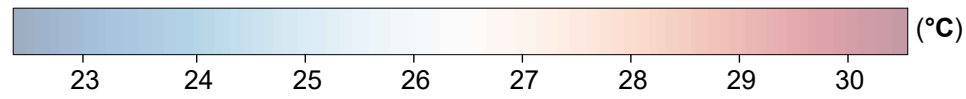


# PRIN2022-PNRR CRiStAll project Turin (Italy) - Climate zone E

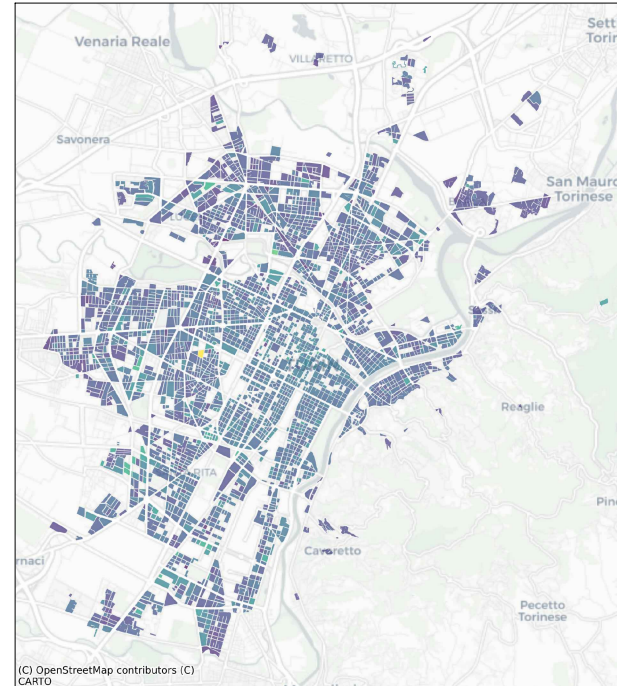
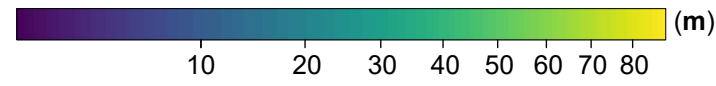
## Land Surface Temperature

### Mean Land Surface Temperature, $LST_m$

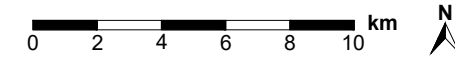
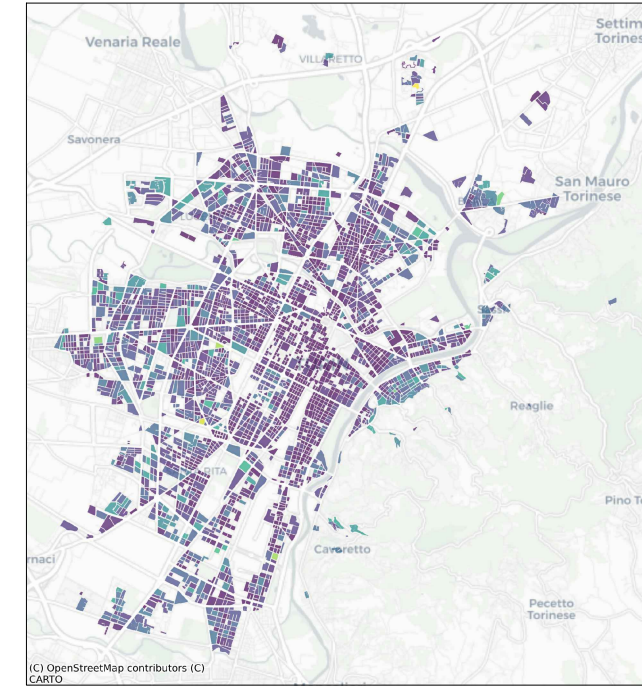
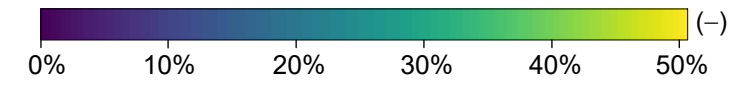


## Urban metrics

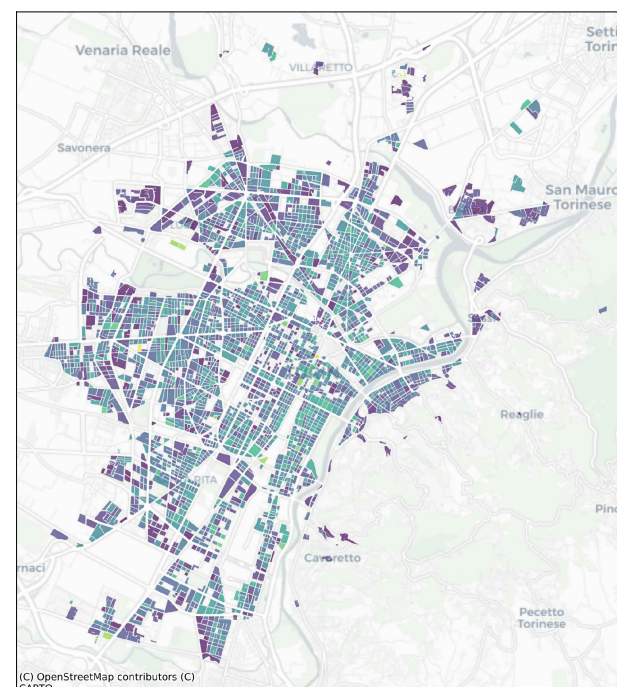
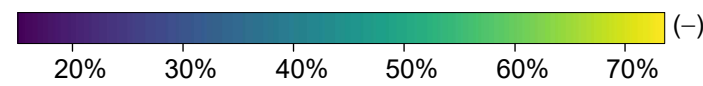
### Average Building Height, $ABH$



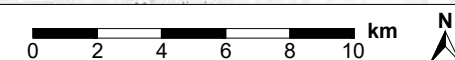
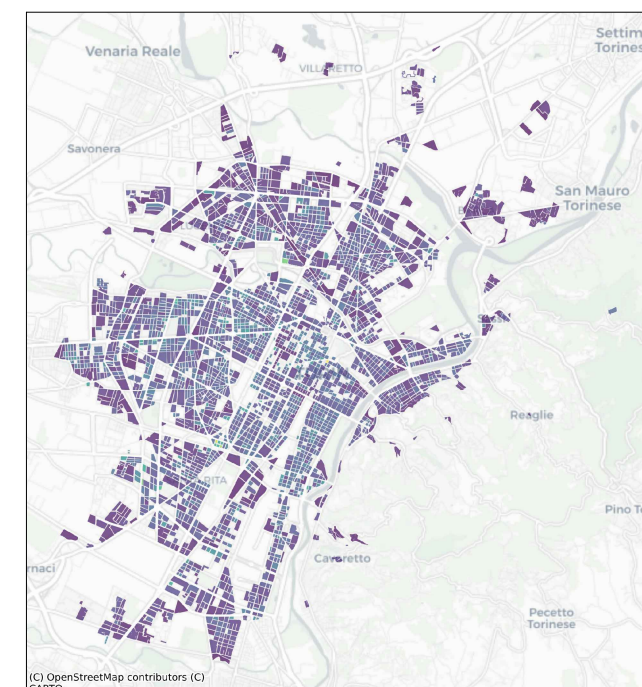
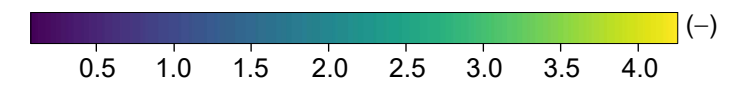
### Green ratio, $GR$



### Surface Coverage, $SC$



### Vertical to Horizontal ratio, $VtH$



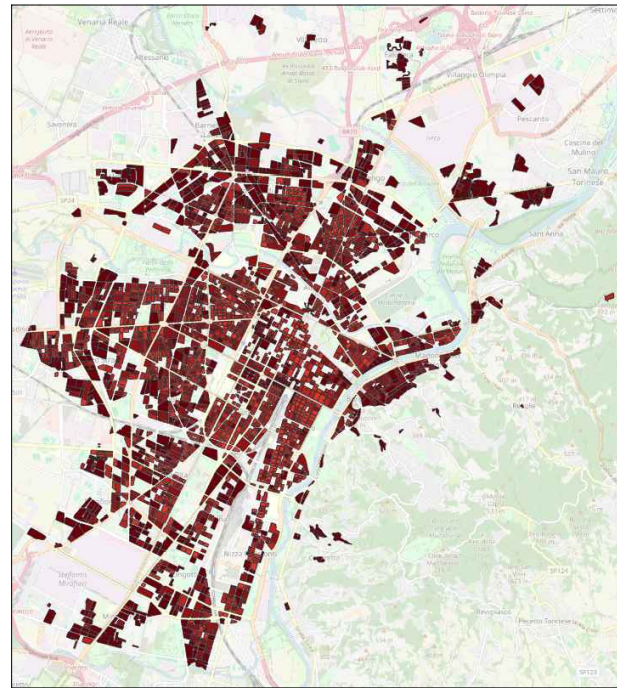
# Synthetic climate indices under different climate scenarios



## Current scenario

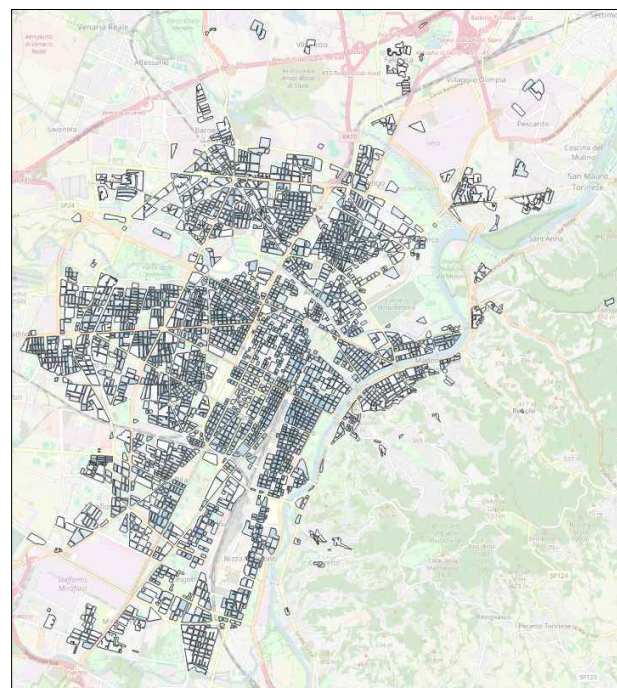
### Heating Degree Days, $HDD_{18}$ [ $^{\circ}\text{C}\cdot\text{d}$ ]

1895 - 1881 1881 - 1877 1877 - 1873 1873 - 1835



### Cooling Degree Days, $CDD_{18}$ [ $^{\circ}\text{C}\cdot\text{d}$ ]

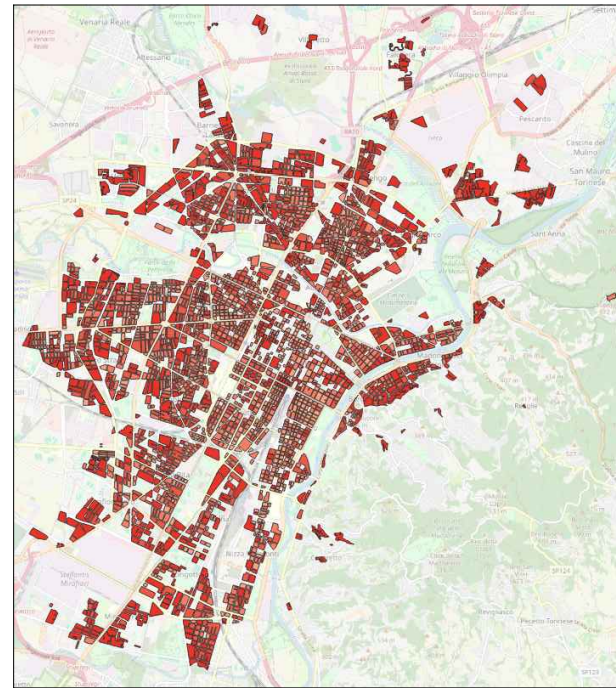
786 - 794 794 - 796 796 - 799 799 - 814



## Mid-term scenario

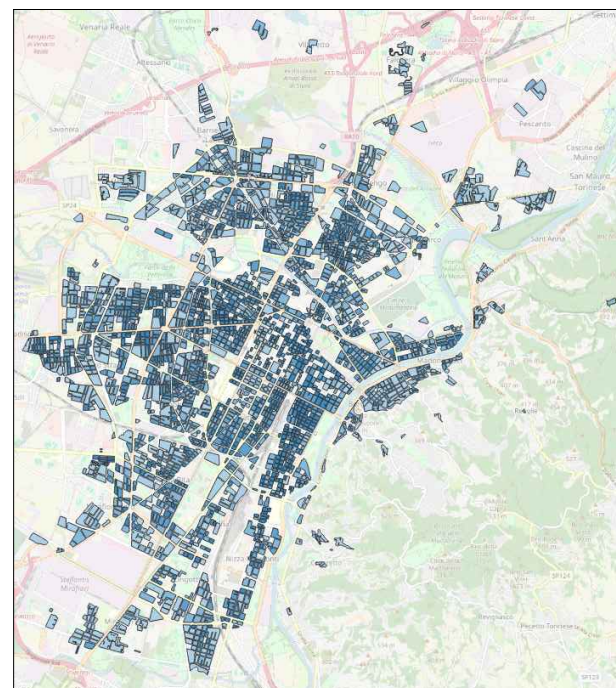
### Heating Degree Days, $HDD_{18}$ [ $^{\circ}\text{C}\cdot\text{d}$ ]

1700 - 1686 1686 - 1682 1682 - 1678 1678 - 1645



### Cooling Degree Days, $CDD_{18}$ [ $^{\circ}\text{C}\cdot\text{d}$ ]

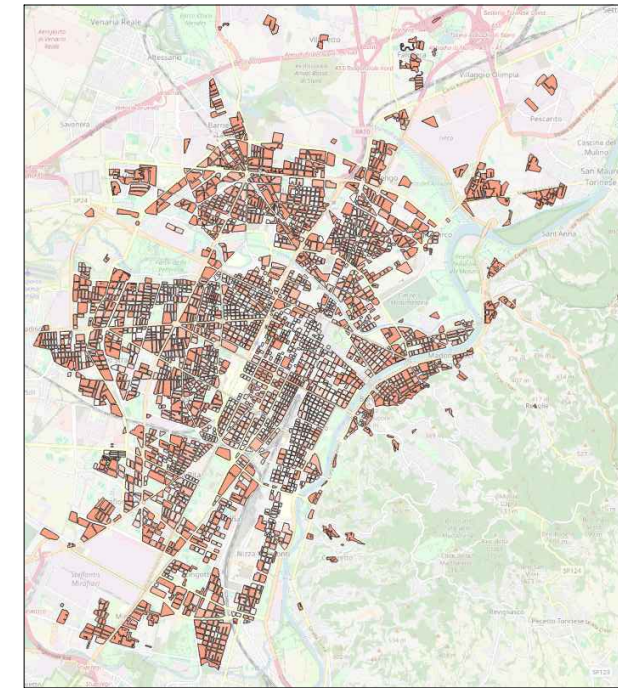
995 - 1004 1004 - 1006 1006 - 1009 1009 - 1027



## Long-term scenario

### Heating Degree Days, $HDD_{18}$ [ $^{\circ}\text{C}\cdot\text{d}$ ]

1193 - 1186 1186 - 1183 1183 - 1180 1180 - 1153



### Cooling Degree Days, $CDD_{18}$ [ $^{\circ}\text{C}\cdot\text{d}$ ]

1531 - 1542 1542 - 1545 1545 - 1548 1548 - 1571

